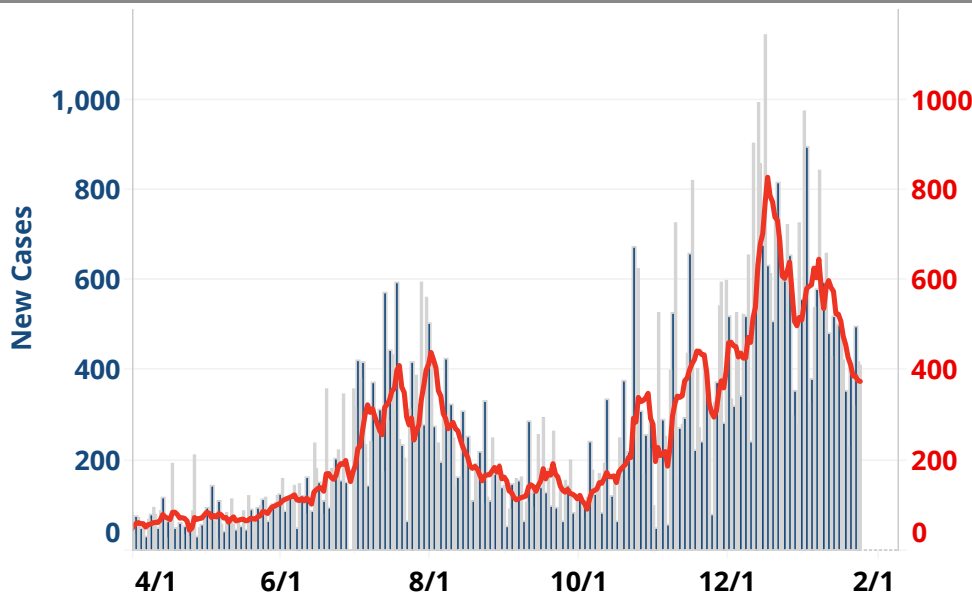


Please select a county: **Shelby**

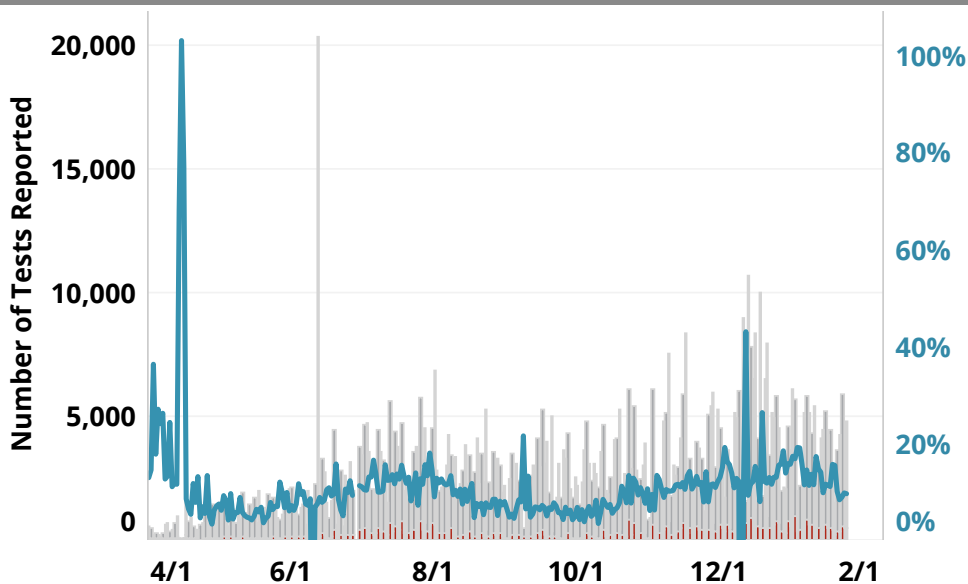
<b>78,795</b> <b>Cases</b> (11.1% of all cases statewide)	<b>2,947</b> <b>Hospitalized</b> (17.9% of all hospitalizations)	<b>1,178</b> <b>Deaths</b> (13.3% of deaths statewide)	<b>72,906</b> <b>Inactive/Recovered</b> (11.1% of all inactive/recovered)
---	--	--	---

Number of COVID-19 Cases Reported by Day (with 7d average)



- To date, **Shelby County** has **8,407.8** cases per 100,000 residents.
- Over the last 7 days (1/18-1/24), **Shelby County** had a daily case rate of **40.1** cases per 100,000 residents per day.
- Over the last 14 days (1/11-1/24), **Shelby County** has averaged **425.4** new cases reported per day. For the 14 days prior (12/28-1/10), the average was **584.8**.

Number and Percent Positive of Tests Reported Daily (Positive / Negative)



- Over the last 7 days, **Shelby County** has averaged **3,891.4** tests per day (**41.5** tests per 10,000 residents per day).
- Over the last 7 days, the average percent positive was **10.3%**.

[Download a printer-friendly version!](#)

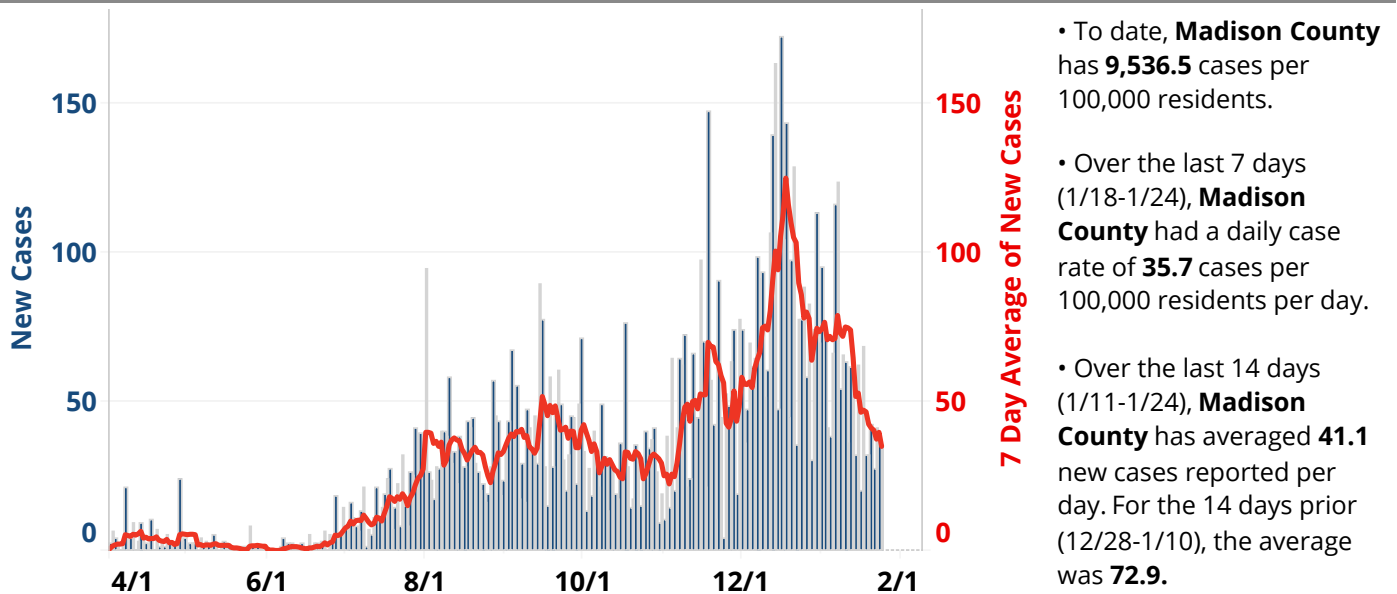


As of January 10, 2021, Shelby County is in the Red Zone. See the [White House Task Force Map](#) for more information.

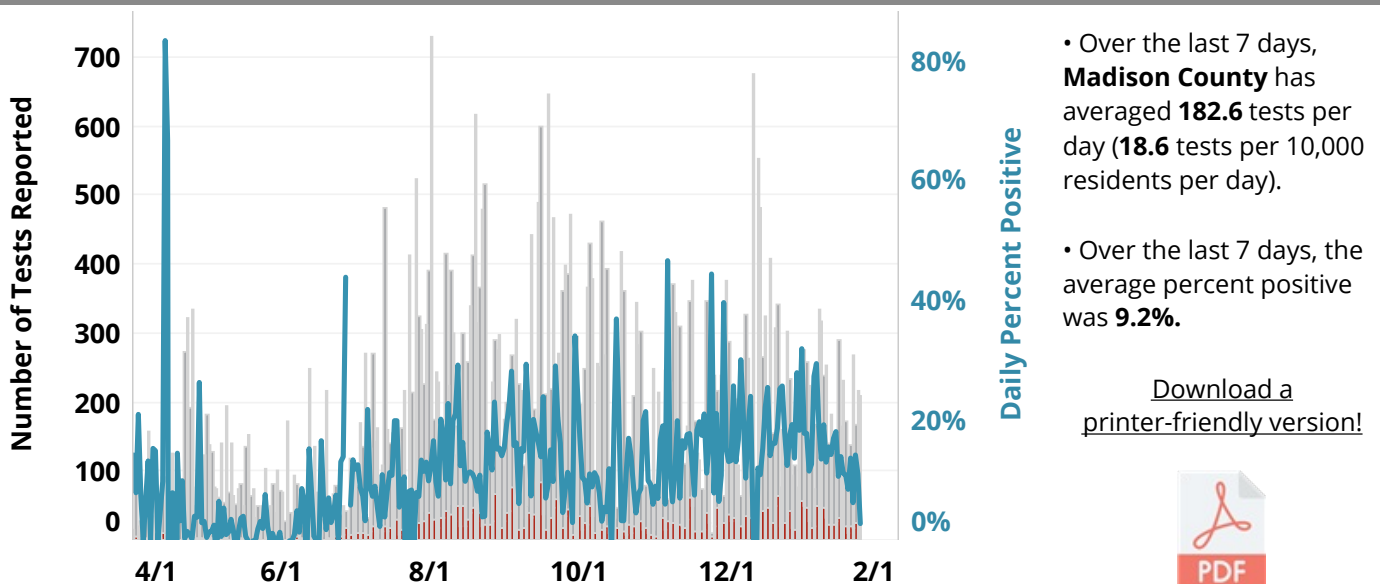
Please select a county: **Madison**

<b>9,344</b> <b>Cases</b> (1.3% of all cases statewide)	<b>289</b> <b>Hospitalized</b> (1.8% of all hospitalizations)	<b>183</b> <b>Deaths</b> (2.1% of deaths statewide)	<b>8,695</b> <b>Inactive/Recovered</b> (1.3% of all inactive/recovered)
---	---	---	---

Number of COVID-19 Cases Reported by Day (with 7d average)

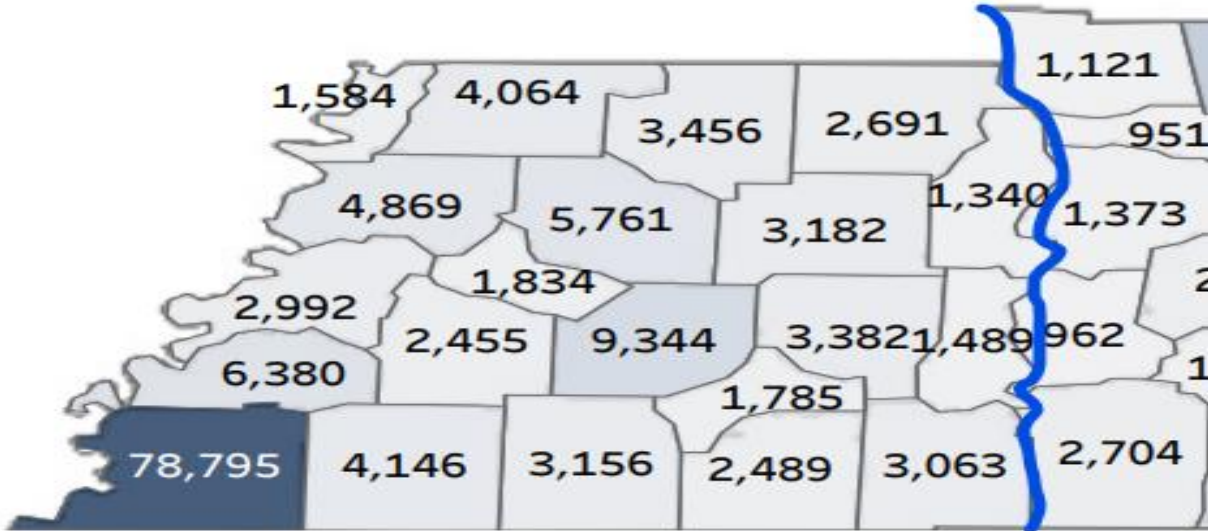


Number and Percent Positive of Tests Reported Daily (Positive / Negative)



As of January 10, 2021, Madison County is in the Red Zone. See the [White House Task Force Map](#) for more information.

Cases by County



Demographics

Minimum Age	Average Age	Maximum Age
0	41	108

Age (years)	Cases	% of Cases	Deaths	% of Deaths
0-10	36,749	5%	5	0%
11-20	88,928	13%	3	0%
21-30	129,116	18%	40	0%
31-40	110,141	16%	88	1%
41-50	105,670	15%	285	3%
51-60	99,592	14%	747	8%
61-70	71,760	10%	1,613	18%
71-80	42,974	6%	2,702	31%
81+	22,688	3%	3,376	38%
Pending	1,099	0%	0	0%

Patient Sex	Cases	% of Cases	Deaths	% of Deaths
Female	376,221	53%	4,062	46%
Male	326,948	46%	4,788	54%
Pending	5,548	1%	9	0%

Race	Cases	% of Cases	Deaths	% of Deaths
American Indian or Alaska Native	898	0%	9	0%
White	423,101	60%	6,537	74%
Black or African American	88,903	13%	1,567	18%
Native Hawaiian or Other Pacific Islander	477	0%	4	0%
Asian	5,995	1%	42	0%
Other/Multiracial	57,951	8%	300	3%
Pending	131,392	19%	400	5%

Ethnicity	Cases	% of Cases	Deaths	% of Deaths
Not Hispanic or Latino	430,781	61%	7,705	87%
Hispanic or Latino	44,688	6%	254	3%
Pending	233,248	33%	900	10%

Outcomes

Ever Hospitalized	Cases	% of Cases
Yes	16,504	2%
No	243,237	34%
Pending	448,976	63%

**Please note for hospitalizations:** Information about hospitalization status is gathered at the time of diagnosis, therefore this information may be incomplete. This number indicates the number of patients that were ever hospitalized during their illness, it does not indicate the number of patients currently hospitalized.

Inactive/Recovered	Cases	% of Cases
Yes	654,335	92%

**Please note for inactive/recovered:** TDH defines "inactive/recovered" as people who are (1) at least 14 days beyond their symptom onset date, or are at least 14 days beyond the first test confirming their illness if asymptomatic, and (2) are not deceased.

Deceased	Cases	% of Cases
Yes	8,859	1%
No	699,858	99%

**Please note for deaths:** Some deaths may be reported by health care providers, hospitals, medical examiners, local health departments, or others before they are included in the statewide count.

Laboratory Testing

Test Type	Positive	Negative	Total
PCR	696,507	5,488,083	6,184,590
Antigen	114,543	733,006	847,549

Please note, these data are meant to provide a rough estimate of testing volume. Due to different source data, numbers may differ slightly from day to day. Laboratory reports of positive cases are reported to metro and local health departments as soon as results are available. State numbers are updated at 2pm daily and there may be a lag in the reporting of cumulative numbers at the state level. Please note numbers within tables may not add up to total confirmed number of cases due to reporting delays and/or missing data. Percentages may not add up to 100.0% due to rounding.